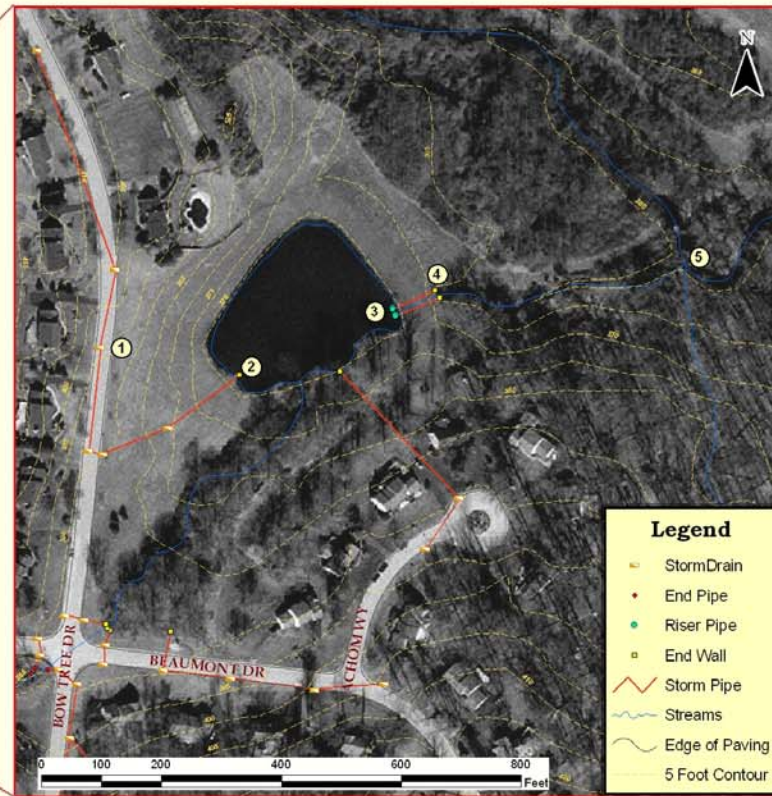




East Goshen Township

Municipal GIS for Storm Water Inventory



1 Storm water containing sediments, motor oil, fertilizers and other surface pollutants from the roads, residential industrial and commercial properties wash into the municipal storm system through the storm drains.



2 Storm water enters retention pond through this endwall.



3 Riser Pipes discharge water from the retention pond after sediments and heavier pollutants settle to the bottom.



4 End Wall discharges to waters of the Commonwealth of Pennsylvania.



5 Storm Water Runoff meets Ridley Creek



Department of Geography and Planning

Produced by Matthew Convery - December 8, 2005

GEO 534 Introduction to GIS

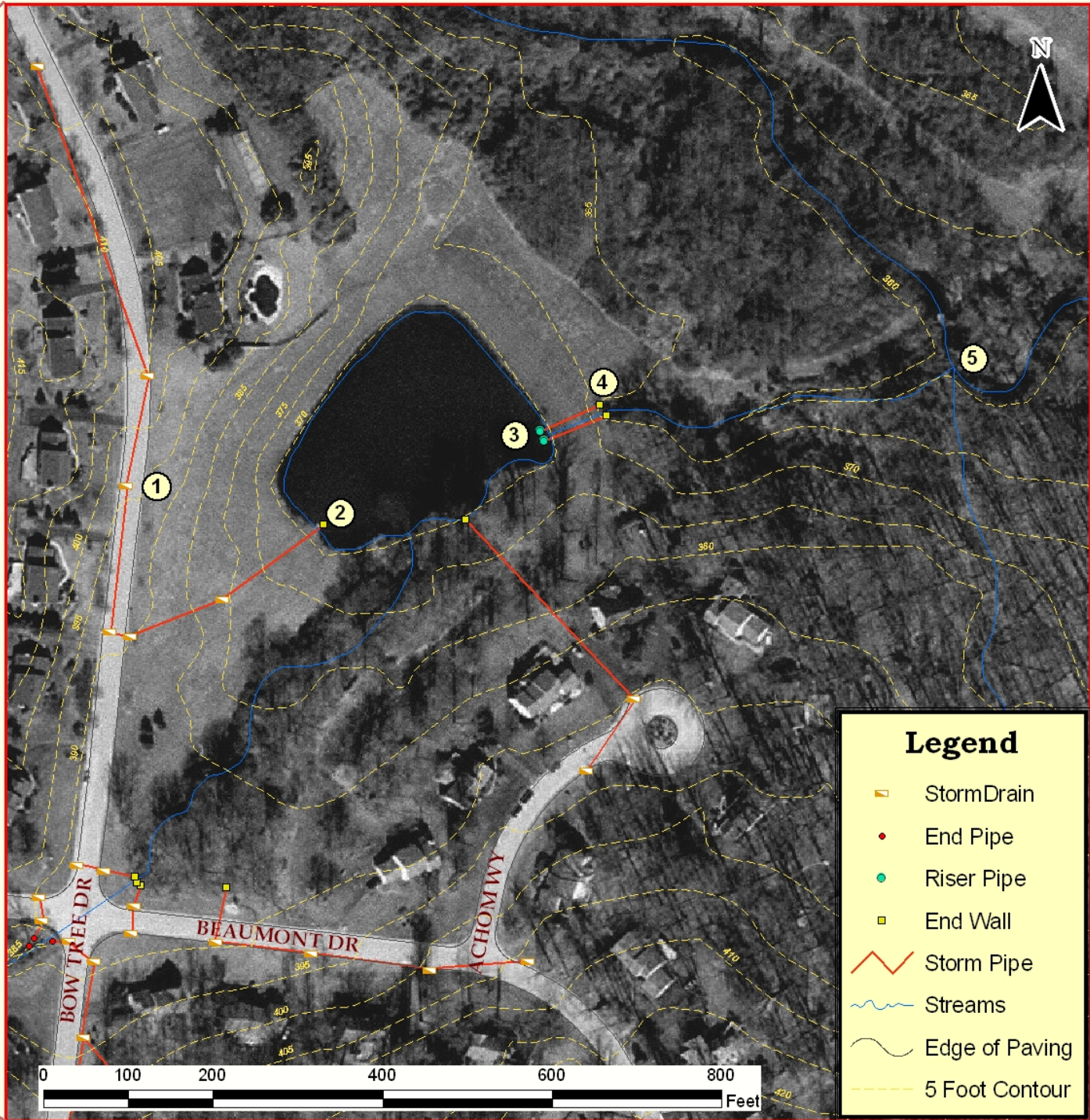
Contact: mc280374@wcupa.edu

References:

Chester County GIS, East Goshen Township GPS data (2001-2004) Pennsylvania Spatial Data Access (PASDA).

Objective:

This project is a demonstration of local municipalities incorporating GIS technology to map storm water infrastructure. Most of the municipalities within Chester County are required to complete a NPDES permit application. One major objective of the NPDES permit is to monitor water quality for storm run-off at the point it enters the stream network of the watershed. East Goshen Township used a Trimble backpack GPS unit to inventory its storm water structures. The attribute data concerning the structures included - depth, material, pipe size and condition. My goal is to use this base information to calculate the drainage areas that outfall into the stream network of the watershed.



End Wall



Retention Pond



Riser Pipes / Outlet



Endwall / Outfall



Storm Water Entering Waters Of the Commonwealth (Ridley Creek)

